

This power unit has a double acting circuit with SAE#6 (9/16-18) A & B ports. 3 position/4 way modular valve (D02) that can be combined with other modular options such as piloted check valves, flow control or even port pressure relief (See P.6 in accessories catalogue). This circuit design also utilize a cartridge check and adjustable relief valve. The magnetic two button remote control comes with holder and 6 meter of cable, which has a quick connection at the motor. The gear pump is equipped with a suction screen attach to a 90° elbow inside the tank which comes with a 3/4" NPT breather/dipstick.

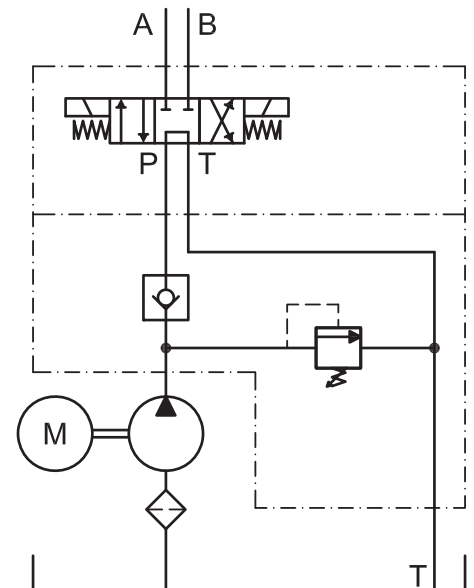
OPTIONS:

- ▶ **Motor:** DC 12 & 24v, or AC 115/230V, single phase or AC 230/460/575V three phase
- ▶ **Tank:** From 1.7 liters to 23.5 liters. Plastic or Steel
- ▶ **Pump:** 0.8, 1.0, 1.3, 1.6, 2.1, 2.5, 3.2, 4.2, 5.8 and 8.0cc
- ▶ 10' remote control cable extension
- ▶ **Mounting:** Vertical or Horizontal

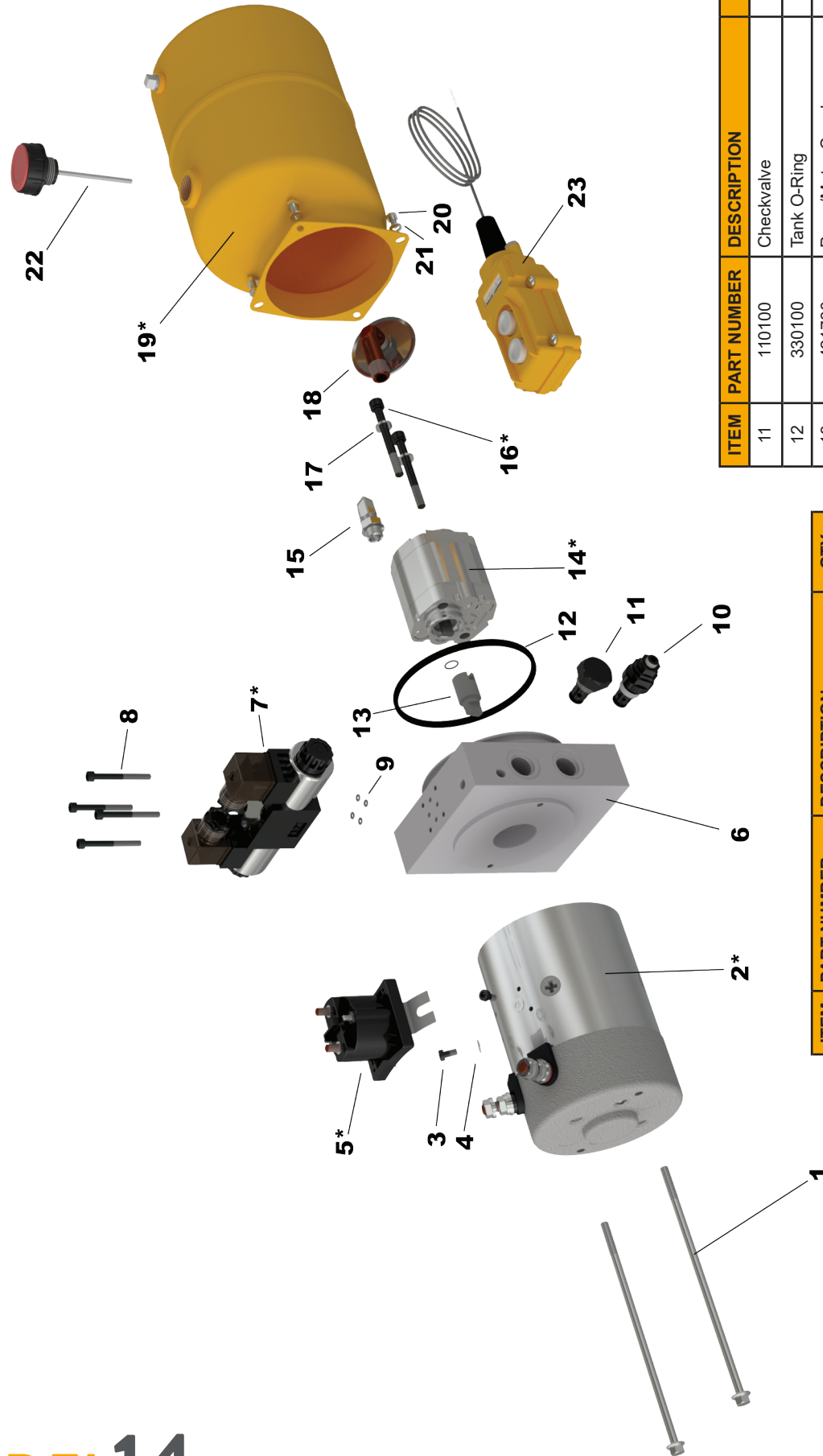


TYPICAL APPLICATION:

- ▶ Power Up / Power Down System
- ▶ Dump Trailer
- ▶ Compactor
- ▶ Presses



EXPLODED VIEW



ITEM	PART NUMBER	DESCRIPTION	QTY
11	110100	Checkvalve	1
12	330100	Tank O-Ring	1
13	421730	Pump/Motor Coupler	1
14	400xxx*	Pump*	1
15	310020	Block Elbow 90°	1
16	301xxx*	Pump Bolt*	2
17	307080	Lockwasher (Pump Bolt)	2
18	150012	Screen Filter Suction Elbow	1
19	500xxx*	Tank*	1
20	300030	Tank Bolt	4
21	307050	Lockwasher (Tank Bolt)	4
22	520030	Breather	1
23	630060	Remote Control	1

ITEM	PART NUMBER	DESCRIPTION	QTY
1	300060	Motor Bolts	2
2	600xxx*	Motor*	1
3	300010	Solenoid Bolt	2
4	307000	Solenoid Washer	2
5	640xxx*	Solenoid*	1
6	210140	Block	1
7	121xxx*	Solenoid Valve D02*	1
8	300500	Valve Bolts	4
9	330130	Valve O-Ring	4
10	111000	Relief Valve	1

* items such as motor, pump, pump bolts, coils, solenoid and tank have different ordering part numbers depending on option purchased originally. Always specify model number and serial number when ordering power unit parts

MODEL 14

All product specifications are subject to change without prior notice.

WWW.EAGLE-HYDRAULIC.COM